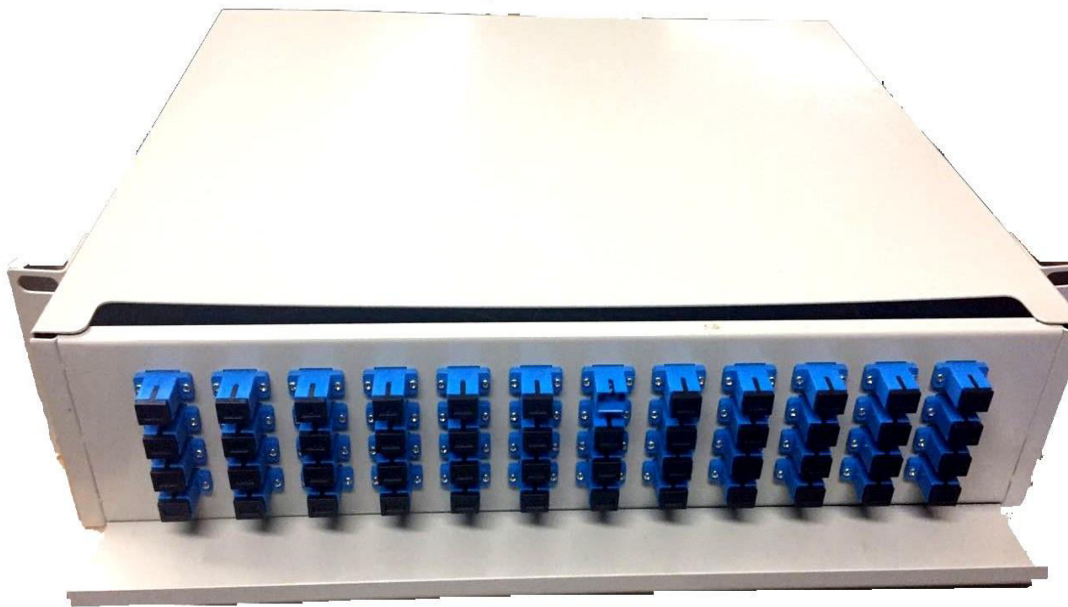


## **48 core SC/FC/ST/LC rack mount Splicing fiber Optic patch panel/Termination Box/ODF (FMS -48F)**



- It fits for 19 inch rack mount for SC adapter (dual port).
- The drawer is the holding board for splicing; the position can be adjusted according to the holes on the board.
- Aluminum sliding fittings with self-locking functions prevent the drawer from falling when moved; flexible and convenient usage.
- The cover can be opened and components put in easily.
- All the internal and outer cables can enter the panel via fixed fittings so that the pigtailed can work there strongly.
- With wide working space, easy to withdraw the fibers when testing and distributing.

Box body is made of high quality cold-rolled steel material, and the surface of the inferior smooth electrostatic praying processing technology

1. Fiber radius of curvature:  $\geq 30\text{mm}$
2. Disk remain fiber length:  $\geq 1.6\text{m}$
3. Fiber maximum capacity: 48core
4. Suitable temperature range:  $-40\sim+60$  degree
5. Resistance to pressure: 500N
6. Resistance to impact: 750N

## FEATURES

- Compliance with the Standard of YD/T925-1997
- Excellent Armor Plate, Good-looking Figure
- Design for large splicing tray
- One to four entry are available
- metal assemblies of optic cable terminating box and optic cable metal strength chip
- Complete accessories
- Reasonable designing
- Large capacity, Core can reach 12-144cores
- Reliability
- Good protection of pigtails
- Order information: